

LONG-TERM CARE

A Comparison of Assisted Living and Nursing Homes

LONG-TERM CARE A range of supportive medical, personal and social services needed by people who are unable to meet their basic living needs for an extended period of time. This support, which requires the aid of a healthy caregiver, can be supplied at an assisted living facility or a nursing home.

What's the difference between the two?



Assisted Living

A place where residents can receive assistance in daily living, but are capable of handling most daily activities on their own and do not need constant care.

VS



Nursing Home

A place of residence for people who require constant nursing care and have significant deficiencies with activities of daily living.

Number of Facilities in the U.S.

38,000

15,600

Average Facility Size



54 UNITS

Facility Size Varies Greatly

From small residential house for one resident

to very large facilities providing services to hundreds of residents.



108.42 BEDS

In recent years, a few nursing homes are beginning to change the way they are managed and organized to create a more resident-centered environment, so they are more "home-like" and less "hospital-like"



Services



Assisted Living

(More Independence)

- Minor Medical Supervision
- Extensive Medical Care
- Personal Care Assistance
- 24-hour supervision
- Security and Emergency Call Systems
- Housekeeping Services
- Social Activities
- Meals
- Resident's freedom
- Transportation



Nursing Home

(More Restrictive)

Staff

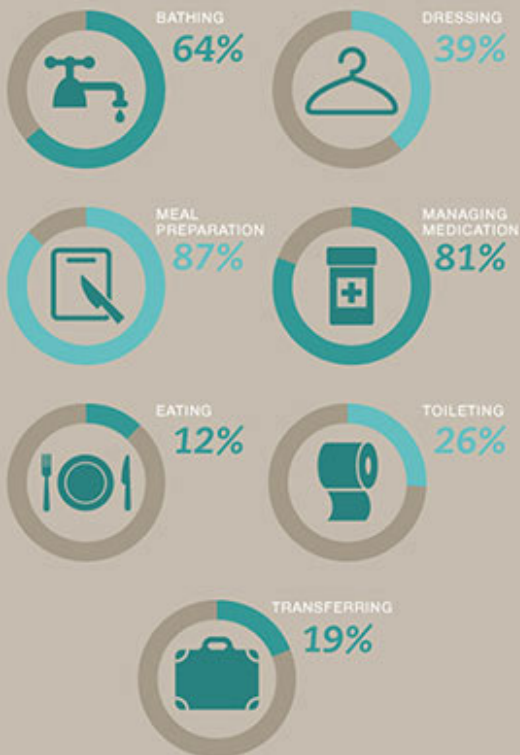


Registered Nurses (RNs) and Licensed Practical Nurses (LPNs) are accessible and on call (but maybe not present).

1.6

Number of Activities of Daily Living (ADL) that Assisted Living Residents need help with

Percentage of Residents Needing Help



Certified nursing homes have licensed practical nurses (LPNs) on duty 24 hours a day.

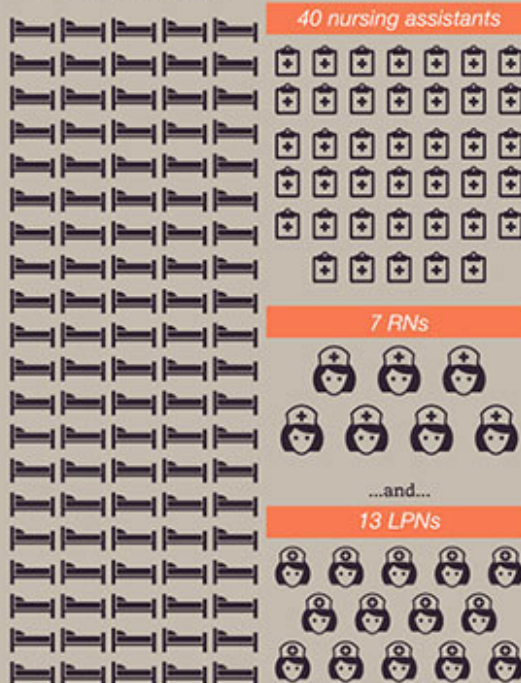


For at least 8 hours per day, 7 days per week, there must be a registered nurse on duty.

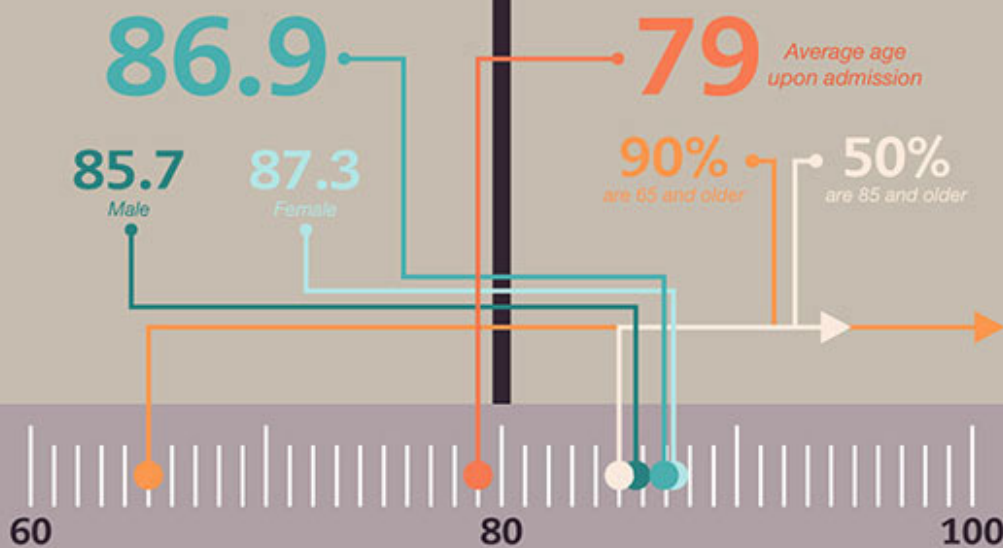


For Every 100 Resident Beds...

...there are...



Average Age

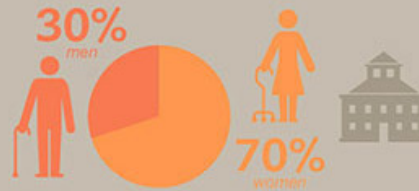
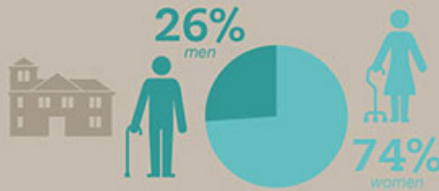


Average Stay

28.3 months

28.8 months

Men vs. Women



Cost

Average Monthly Medians



Highs and Lows of States - Average Monthly Medians

Assisted Living Facility - Private Room



Nursing Home - Private Room



Insurance Coverage



Neither Medicare Parts A nor B offer coverage for comprehensive ongoing long-term care.

Many states cover some assisted living services under their Medicaid programs; however, these fluctuate widely in terms of eligibility requirements and dollar amounts of coverage.

98.5%

Nursing facilities certified to participate in Medicare, Medicaid or both



A "Skilled Nursing Facility" is a nursing home certified to participate in, and be reimbursed by Medicare.

A "Nursing Facility" is a nursing home certified to participate in, and be reimbursed by Medicaid.

Medicare covers nursing home services for up to 100 days for beneficiaries who require skilled nursing care or rehabilitation services following a hospitalization of at least three consecutive days.

SOURCES

Genworth Financial Cost of Care Surveys, 2005-2011
http://www.genworth.com/content/products/long_term_care/long_term_care/cost_of_care.html
<http://www.ahcancal.org/hcal/resources/Pages/ResidentProfile.aspx>
http://www.aifa.org/aifa/Assessing_Cost.asp#Average
<http://www.assistedlivingfacilities.org/blog/assisted-living-compared-to-nursing-homes/>
<http://www.cdc.gov/nchs/fastats/nursing.htm>
http://www.psscater.org/nursing_homes/nursing_trends_2009.php
http://www.psscater.org/documents/OSCAR_complete_2010.pdf
<http://www.pbs.org/newshour/health/nursinghomes/facts.html>
<http://www.investopedia.com/articles/04/112904.asp#axzz1c7171PwN>
<http://www.elmoody.com/longterm/nursingstatistics.html>
http://en.wikipedia.org/wiki/Assisted_living
http://en.wikipedia.org/wiki/Nursing_home



INFOGRAPHIC BROUGHT TO YOU BY
Assisted Living Facilities.org

AND



Skilled Nursing Facilities.org